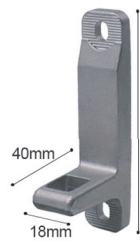
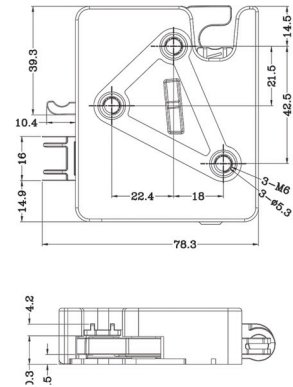
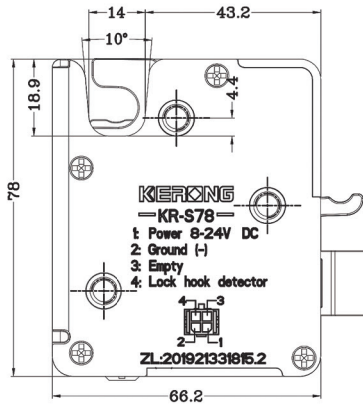


KR-S78

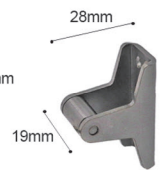
- Motor driven, low power consumption, and more stable.
- 304 stainless steel lock shell.
- Zinc Alloy lock tongue, can pass more than 72 hours salt spray test.
- Mechanical emergency lever, can be unlocked manually in case of power failure.
- Omron detective switch from Japan, working life as 500,000 times.
- Support customizing wires and connectors.



Hook



HOOK A1



HOOK B1



HOOK C1

| | |
|-------------------------|----------------------|
| Material of lock body | 304 Stainless steel |
| Material of lock tongue | Zinc Alloy |
| Current | 60mA@12V |
| Power consumption | 0.72W |
| Revolution speed | 4.5Rev/s |
| Response time | 1S |
| Voltage | 8V-24V(typical: 12V) |
| Working temperature | -40°C ~+75°C |
| Working humidity | 5%-95%RH |

