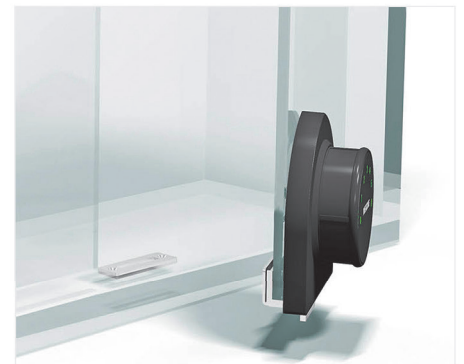
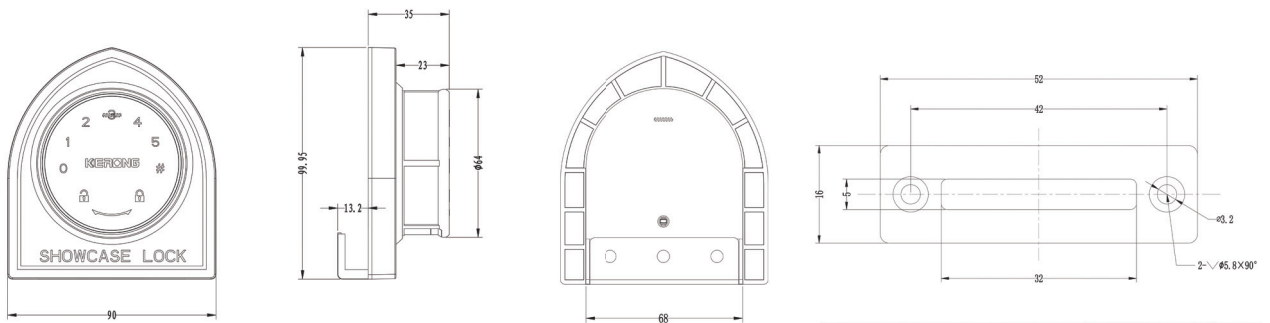


KR-S64G2



- Various working modes available (public mode, private mode etc), suit for different application.
- Low voltage alarm: if voltage is lower than 2.5V, lock will prompt with sound and light on every opening.
- Powered by 1*3V button battery, and battery can be changed very easily.
- Various colors of lock can be chosen: black and white.
- Suit for various kinds glass cabinet door: single swing door and double swing door.



Material	Lock body: ABS+Zinc Alloy, Acrylic touch screen
Battery	DC 3V (1* button battery CR2032)
Static power consumption	<25 uA
Dynamic power consumption	<300 mA
Low voltage	2.5V±0.1V
Anti-air discharge	15KV
Touch discharge	8KV
Working temperature	-20°C ~+65°C
Working humidity	10%-90%RH

