



Professional manufacturer of locker locks

**KERONG INDUSTRY CO, LTD**

Hotline: +86-755-28396063

Mobile: +86-13420991032

Email: betty@kerong.hk

Address: Factory No. 3, No. 68, Tongli Road,
Tongle Community, Baolong Street, Longgang District,
Shenzhen, Guangdong, China
Zip code: 518117

PRODUCT CATALOGUE

KERONG INDUSTRY CO, LTD

Professional manufacturer of locker locks

company introduction

Professional manufacturer of locker locks

Guangdong
Shenzhen

KERONG Industry Co., Ltd. established in 2002, is a professional manufacturer specializing in the R&D, production, sales service of electronic locks, intelligent locker systems, digital cabinet locks and other related security products.

Over these years, KERONG has consistently focused on products development and personal training of all staffs, including product technology and personal qualities, to achieve integrated development. We know how to constantly keep developing competitive products and keep pace with the times to meet the demand of most users.

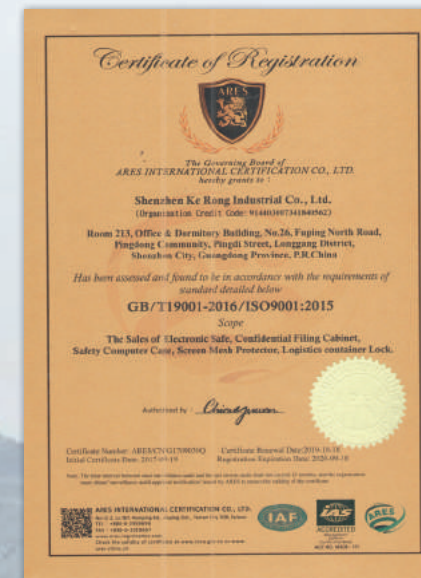
At the same time, continuously invest in the most advanced technology and equipment, maintain relevant product technology training of all staffs, enables us to go from strength to strength, make our staffs more and more professional. Creating an unique business mode with strong and comprehensive marketing and after-sales service support network.

KERONG always delicated to quality control and customer service. Our R&D team can provide a complete solution. We also welcome OEM and ODM orders.

We will serve you wholeheartedly and hope to be one of your friends and business partners.

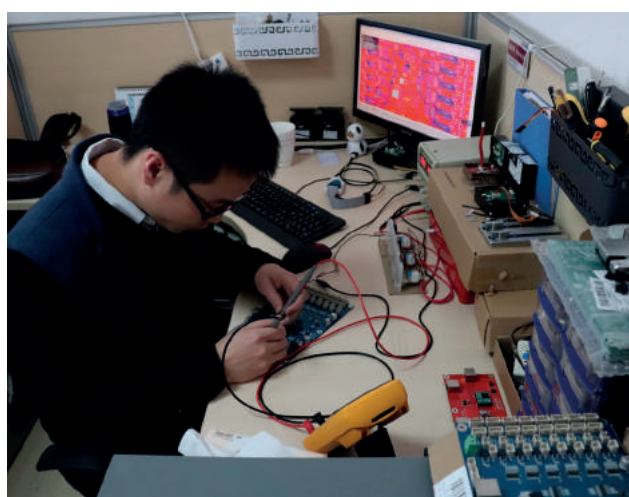


Enterprise Certificates



OUR R & D TEAM

KERONG always adheres to the professional innovation of product as it is core competitiveness. And regards technology research and development and personnel training as the goal of company.



OUR SALES TEAM

Our sales staffs are trained with the latest comprehensive techniques, this enables us to go from strength to strength, create an unique business model with comprehensive and professional marketing and after-sales support network.



Electronics Department



Assembly Department



Quality Department

OUR PRODUCTION

Our employees are trained with professional techniques. Each part of the production is strictly in accordance with the operation instructions and process managements. Also with regular training to ensure product quality, and all products need to meet the safety and environmental requirements of each country.



FACTORY SCENE

At present, KERONG production workshop has nine standardized production lines. With professional testing equipment, such as tensile strength test machine, salt spray test machine, vibration test machine, etc. We uphold attitude towards product excellence, products undergo professional quality control system.

To make sure products customers got can work, we also has a strong and comprehensive after-sale support network to protect customers' after-sales service benefits!



Electronics Workshop



Production Workshop



Shelf



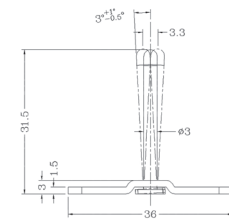
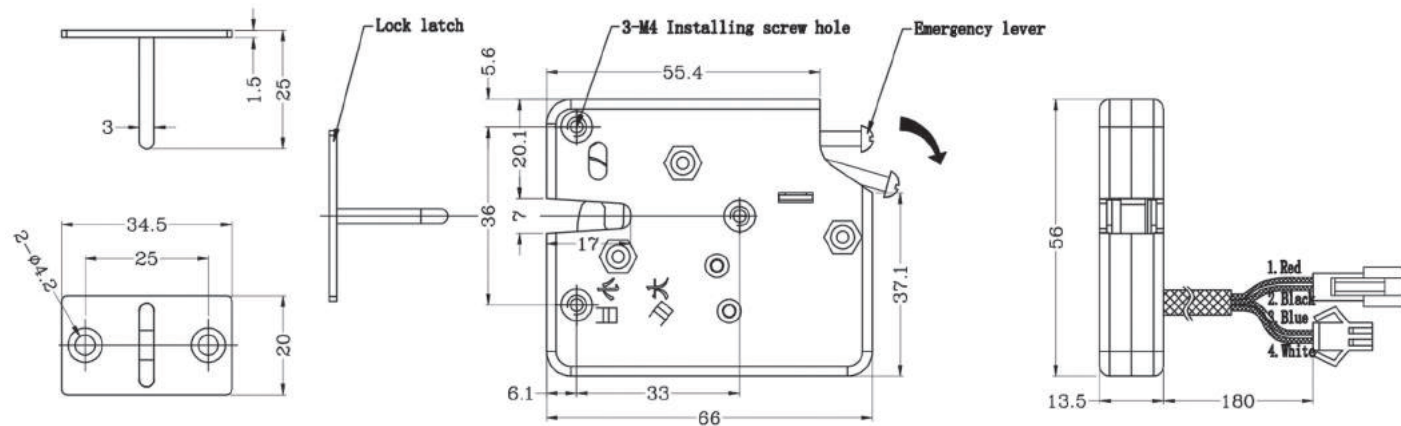
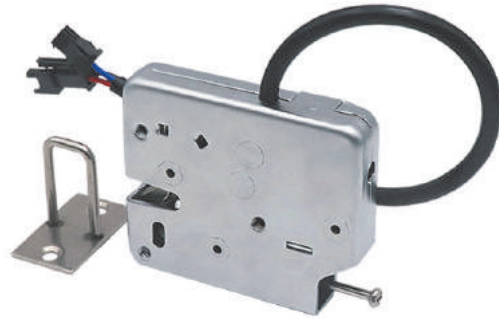
Aging Test

PRODUCTION EQUIPMENT



KR-S66

- AWG24 wires with PVC protecting tube.
- Solenoid driven, support 12V&24V.
- Anti-force performance as 250kgf.
- Omron detective switch from Japan, working life as 500,000 times.
- Mechanical emergency lever, can be unlocked manually in case of power failure.
- Support customizing wires and connectors.
- 430 stainless steel lock shell, Zinc Alloy lock tongue, can pass more than 72 hours salt spray test.
- Push lever help push door open, also can be removed.



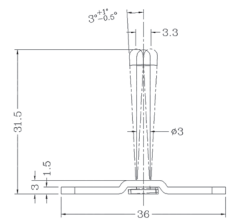
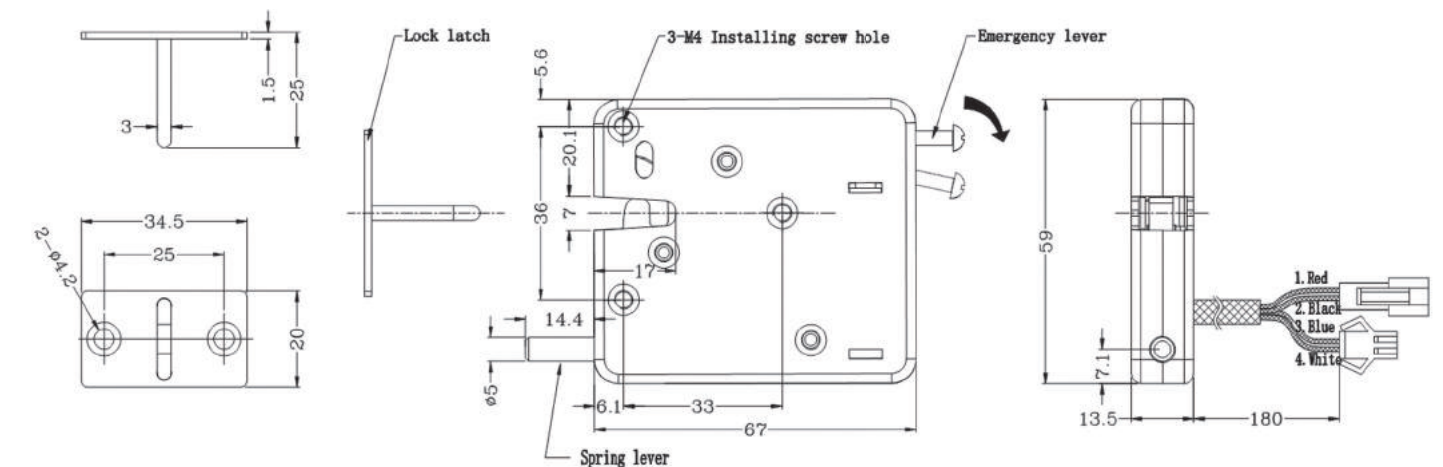
Movable Lock Hook

Material of lock body	430 Stainless steel
Material of lock tongue	Zinc Alloy
Surface treatment	/
Door weight	0.5KG~4KG
Working voltage	12V & 24V
Working current	0.8A / 2A
Maximum power	24W
Working temperature	-40°C ~+75°C
Working humidity	5%~95%RH



KR-S66N

- AWG24 wires with PVC protecting tube.
- Solenoid driven, support 12V&24V.
- Anti-force performance as 250kgf.
- Omron detective switch from Japan, working life as 500,000 times.
- Mechanical emergency lever, can be unlocked manually in case of power failure.
- Support customizing wires and connectors.
- 430 stainless steel lock shell, Zinc Alloy lock tongue, can pass more than 72 hours salt spray test.
- Push lever help push door open also can be removed.



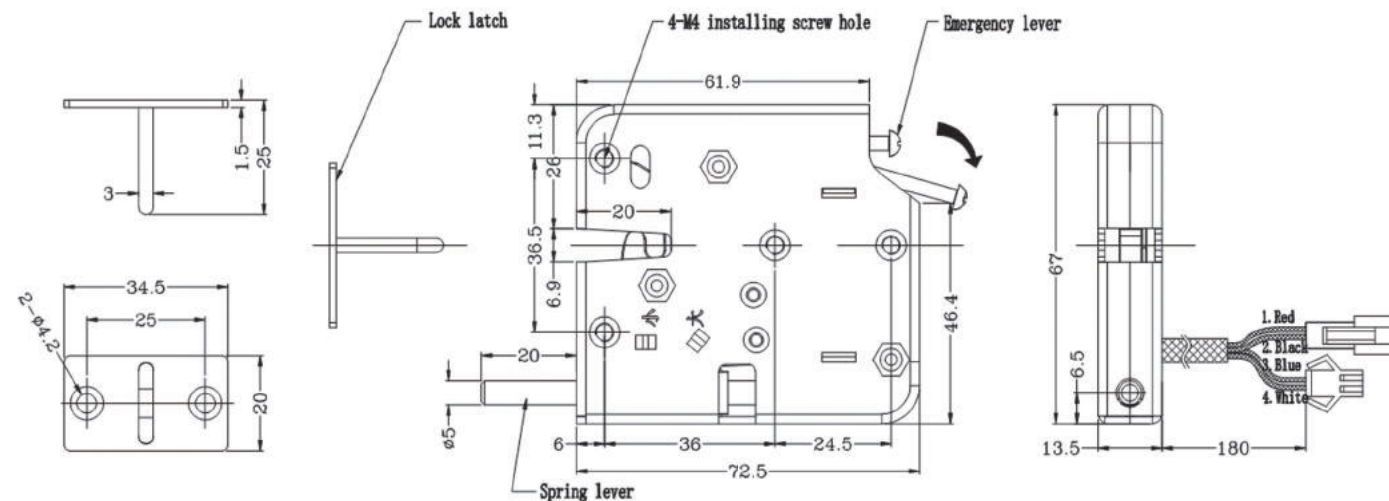
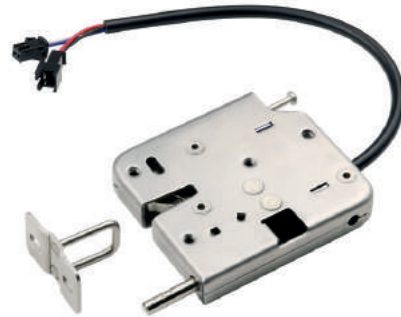
Movable Lock Hook

Material of lock body	430 Stainless steel
Material of lock tongue	Zinc Alloy
Surface treatment	/
Door weight	0.5KG~4KG
Working voltage	12V / 24V
Working current	1A~2A
Maximum power	24W
Working temperature	-40°C ~+75°C
Working humidity	5%~95%RH



KR-S99

- AWG24 wires with PVC protecting tube.
- Solenoid driven, support 12V&24V.
- Anti-force performance as 250kgf.
- Omron detective switch from Japan, working life as 500,000 times.
- Mechanical emergency lever, can be unlocked manually in case of power failure.
- Support customizing wires and connectors.
- 430 stainless steel lock shell, Zinc Alloy lock tongue, can pass more than 72 hours salt spray test.



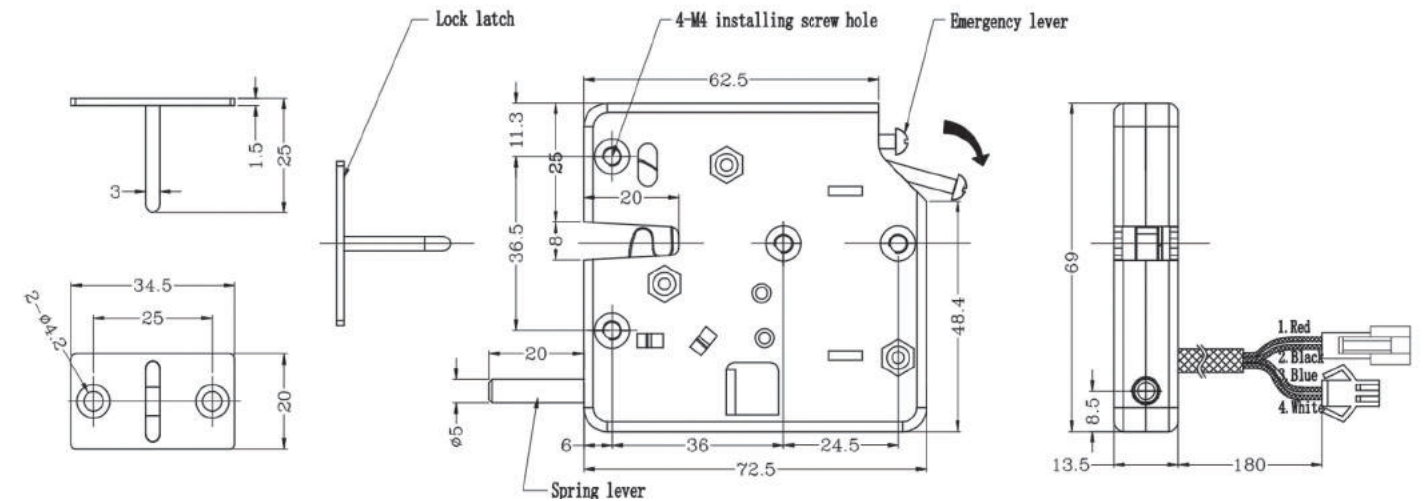
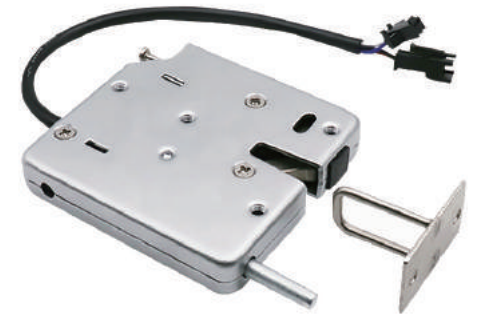
Movable Lock Hook

Material of lock body	430 Stainless steel
Material of lock tongue	Zinc Alloy
Surface treatment	/
Door weight	0.5KG~4KG
Working voltage	12V & 24V
Working current	0.8A / 2A
Maximum power	24W
Working temperature	-40°C ~+75°C
Working humidity	5%~95%RH



KR-S99N

- AWG24 wires with PVC protecting tube.
- Solenoid driven, support 12V&24V.
- Anti-force performance as 250kgf.
- Omron detective switch from Japan, working life as 500,000 times.
- Mechanical emergency lever, can be unlocked manually in case of power failure.
- Support customizing wires and connectors.
- 430 stainless steel lock shell, Zinc Alloy lock tongue, can pass more than 72 hours salt spray test.



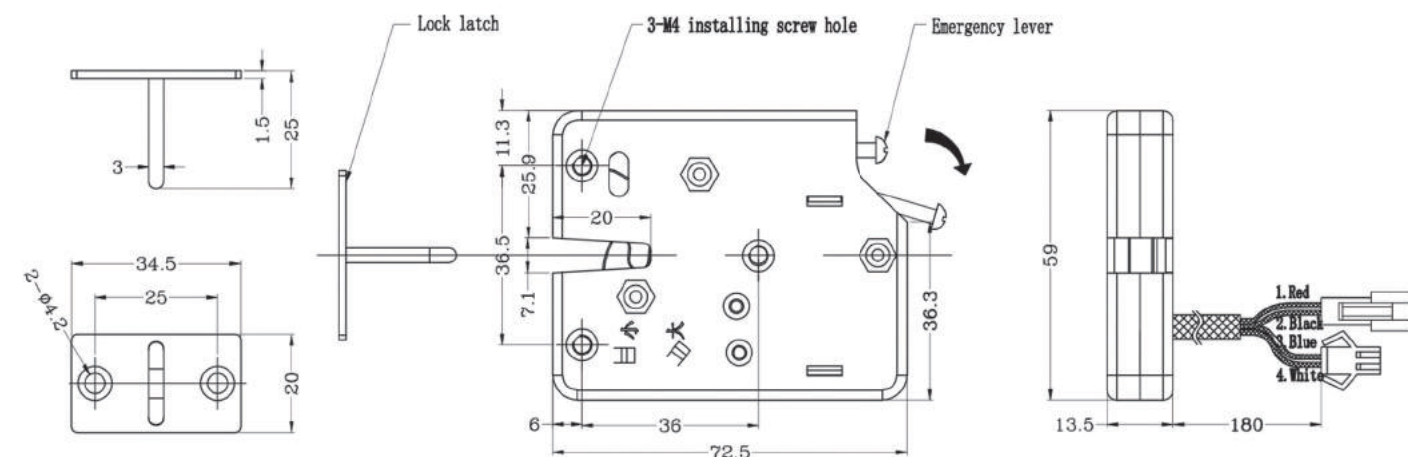
Movable Lock Hook

Material of lock body	430 Stainless steel
Material of lock tongue	Zinc Alloy
Surface treatment	/
Door weight	0.5KG~4KG
Working voltage	12V & 24V
Working current	0.8A / 2A
Maximum power	24W
Working temperature	-40°C ~+75°C
Working humidity	5%~95%RH



1

-
- A silver metal reed switch assembly is shown. It consists of a rectangular metal housing with several screws. A black cable is connected to the top of the housing. A metal plate is attached to the side of the housing. The assembly is shown against a white background.

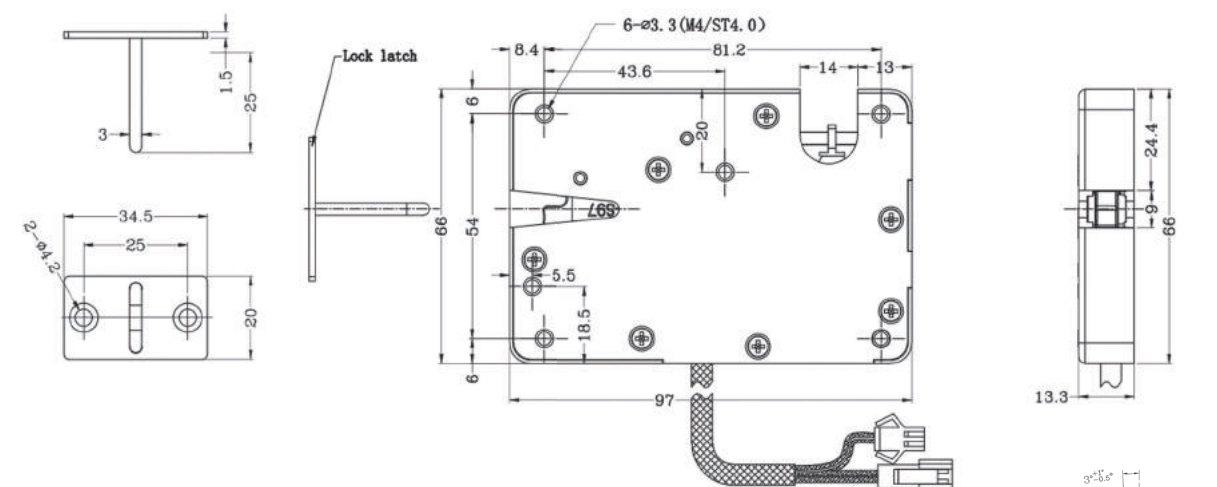


Material of lock body	430 Stainless steel
Material of lock tonque	Zinc Alloy
Surface treatment	/
Door weight	0.5KG~4KG
Working voltage	12V & 24V
Working current	0.8A / 2A
Maximum power	24W
Working temperature	-40°C ~+75°C
Working humidity	5%-95%RH

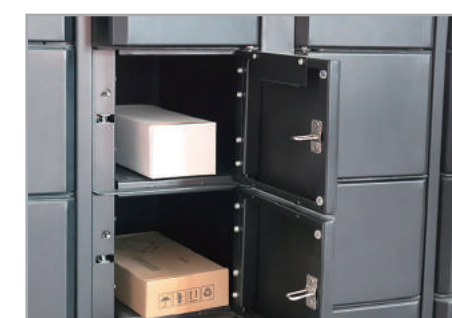


1

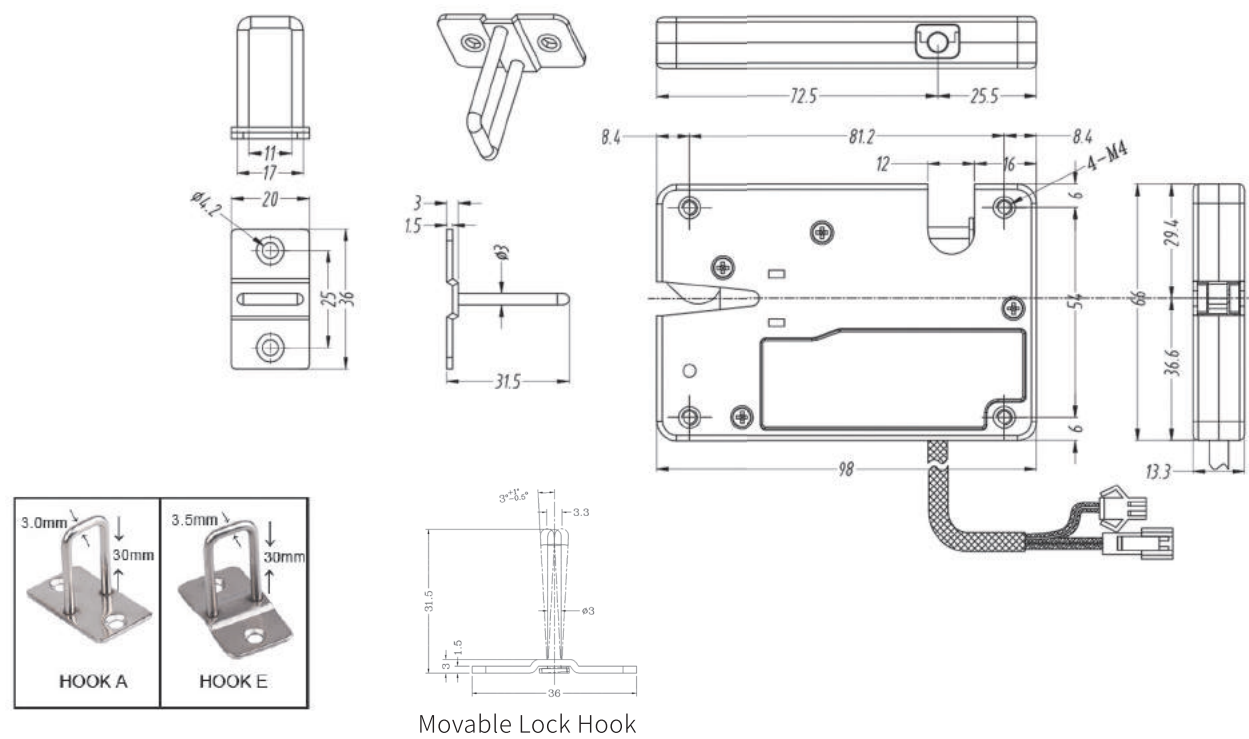
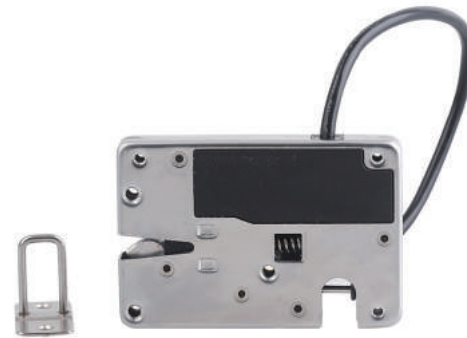
- 
- A white rectangular module with a black cable and a multi-colored connector. The module has a small rectangular cutout on one side and a circular port on the other. The cable is black and ends in a multi-colored connector with red, green, and blue wires.



Material of lock body	ABS+PC
Material of lock tonque	Zinc Alloy
IP rating	IP65
Door weight	0.5KG-4KG
Workina voltage	12V & 24V
Workina current	0.8A / 2A
Maximum power	24W
Working temperature	-40°C ~+75°C
Working humidity	5%-95%RH



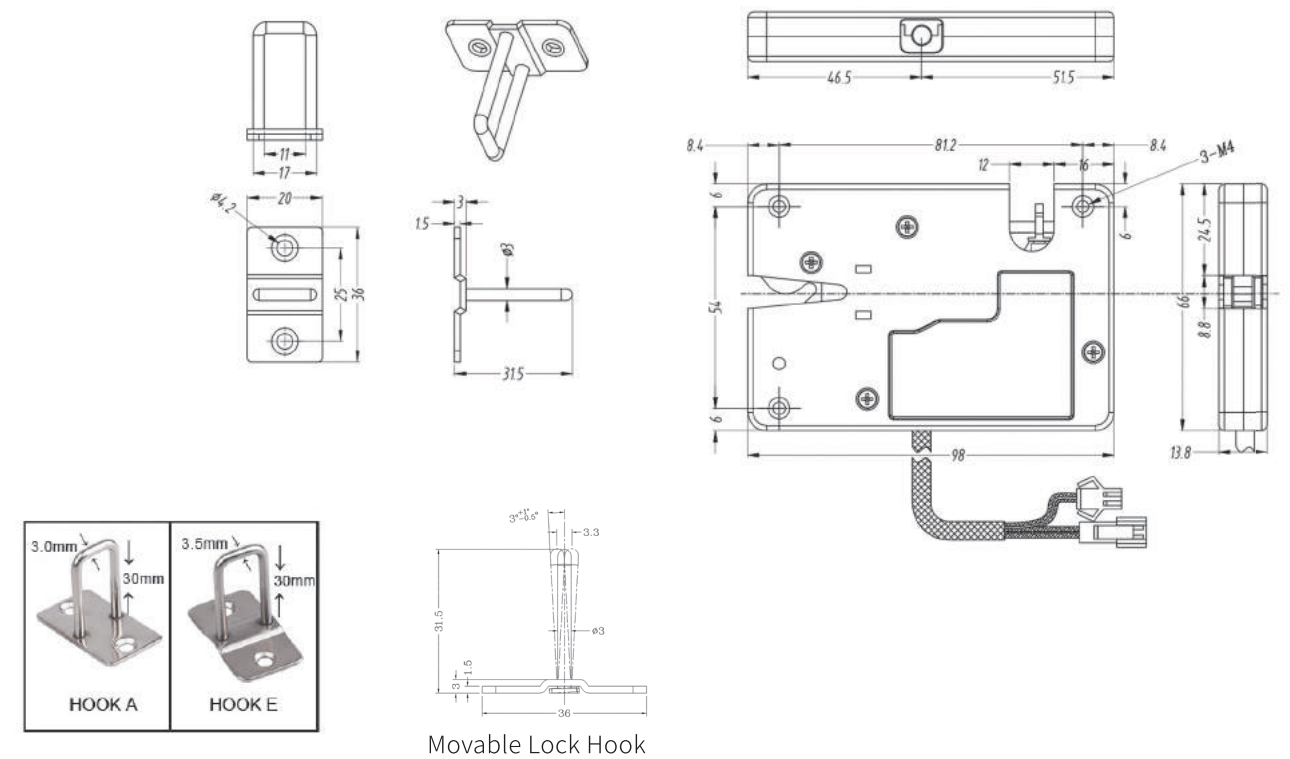
- AWG24 wires with PVC protecting tube.
- Motor driven, low power consumption, more stable.
- 430 stainless steel, Zinc Alloy lock tongue, can pass more than 72 hours salt spray test.
- Mechanical emergency lever, can be unlocked manually in case of power failure.
- Omron detective switch from Japan, with working life as 500,000 times.
- Can be waterproof, all electronic parts are protected in the ABS box, IP rating is IP65.
- Support customizing wires and connectors.



Material of lock body	430 Stainless steel
Material of lock tonque	Zinc Alloy
Surface treatment	Passivation
Door weight	10KG~50KG
Working voltage	8V~24V
Working current	100mA@12V
Maximum power	1.2W
Workina temperature	-40°C ~+75°C
Working humidity	5%-95%RH



- AWG24 wires with PVC protecting tube.
- Solenoid driven, support 12V&24V.
- 430 stainless steel, Zinc Alloy lock tongue, can pass more than 72 hours salt spray test.
- Mechanical emergency lever, can be unlocked manually in case of power failure.
- Omron detective switch from Japan, with working life as 500,000 times.
- Can be waterproof, all electronic parts are protected in the ABS box, IP rating is IP65.
- Support customizing wires and connectors.



Material of lock body	430 Stainless steel
Material of lock tongue	Zinc Alloy
Surface treatment	Passivation
Door weight	0.5KG~4KG
Working voltage	10V~15V
Working current	1.75A @ 12V
Maximum power	21W
Working temperature	-40°C ~+75°C
Working humidity	5%~95%RH

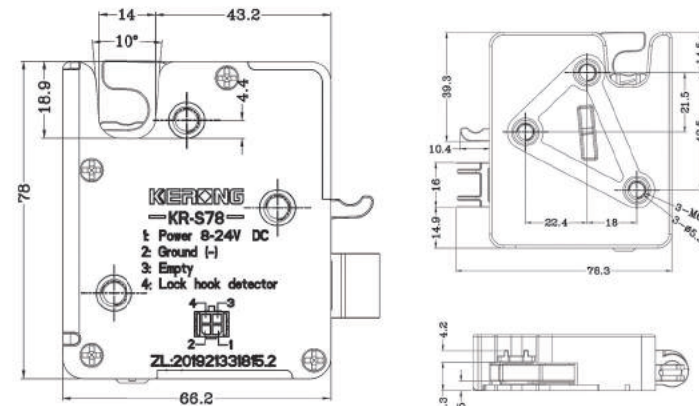


KR-S78

- Motor driven, low power consumption, and more stable.
- 304 stainless steel lock shell.
- Zinc Alloy lock tongue, can pass more than 72 hours salt spray test.
- Mechanical emergency lever, can be unlocked manually in case of power failure.
- Omron detective switch from Japan, working life as 500,000 times.
- Support customizing wires and connectors.



Hook

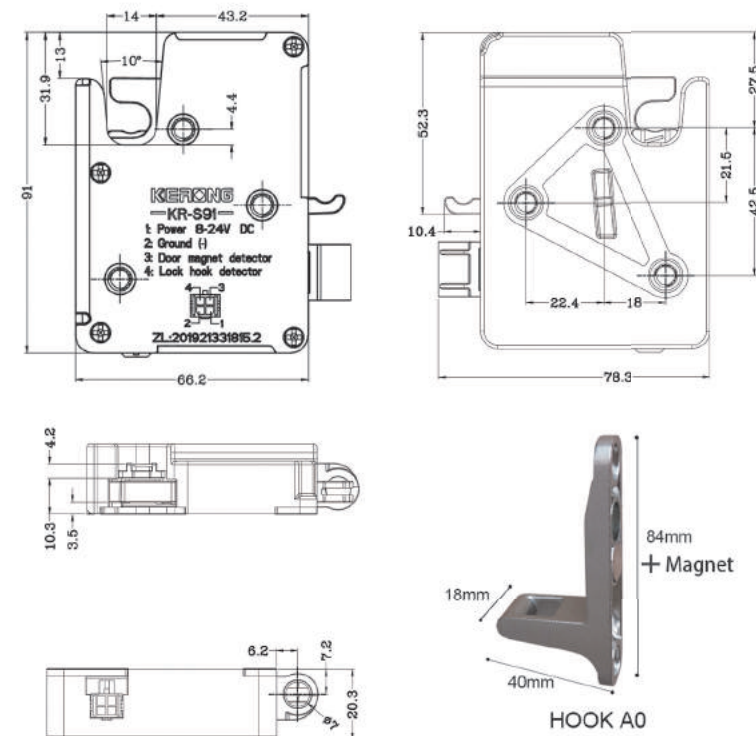


Material of lock body	304 Stainless steel
Material of lock tongue	Zinc Alloy
Current	60mA@12V
Power consumption	0.72W
Revolution speed	4.5Rev/s
Response time	1S
Voltage	8V-24V(typical: 12V)
Working temperature	-40°C ~+75°C
Working humidity	5%~95%RH

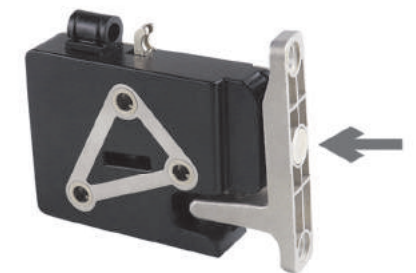


KR-S91

- Motor driven, low power consumption, and more stable.
- 304 stainless steel lock shell.
- Zinc Alloy lock tongue, can pass more than 72 hours salt spray test.
- Mechanical emergency lever, can be unlocked manually in case of power failure.
- Omron detective switch from Japan, working life as 500,000 times.
- With door magnet detective function, to check whether the cabinet door is closed well.
- Support customizing wires and connectors.



Hook



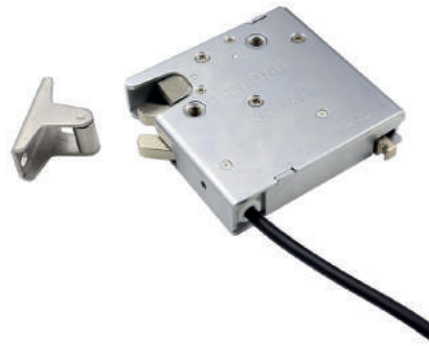
Door Magnetic Detection

Material of lock body	304 Stainless steel
Material of lock tongue	Zinc Alloy
Current	60mA@12V
Power consumption	0.72W
Revolution speed	4.5Rev/s
Response time	1S
Voltage	8V-24V(typical: 12V)
Working temperature	-40°C ~+75°C
Working humidity	5%~95%RH



KR-S79

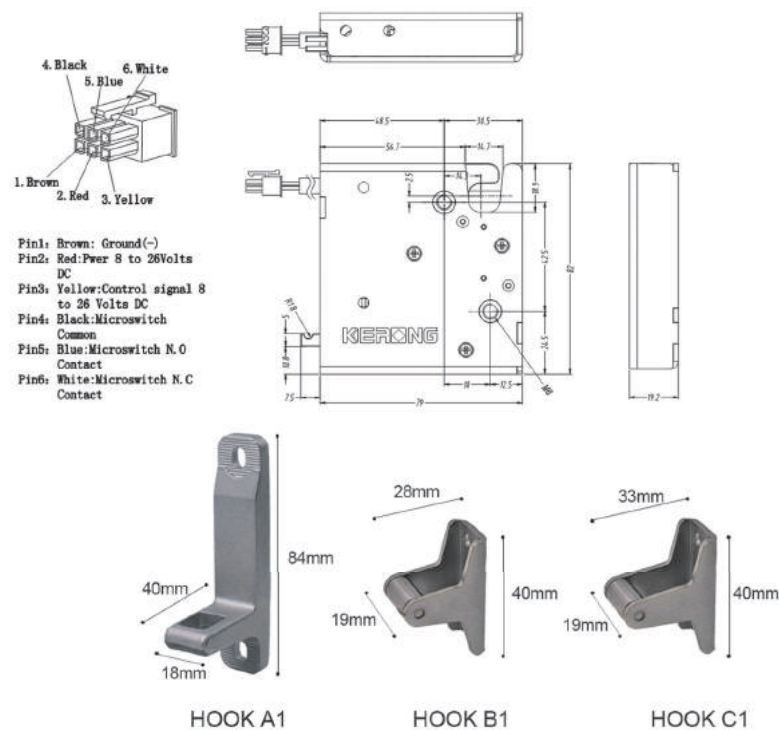
- Motor driven, low power consumption, and more stable.
- 304 stainless steel lock shell, thickness as 2.0mm, strong enough.
- Zinc Alloy lock tongue, can pass more than 72 hours salt spray test. Thickness as 6.0mm, not easy to be broken.
- Mechanical emergency lever, can be unlocked manually in case of power failure.
- Omron detective switch from Japan, working life as 500,000 times.
- Five kinds working signal modes, can meet different customers' requirements.
- Can be waterproof, IP rating as IP65.



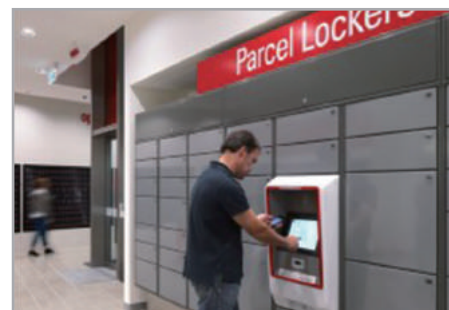
Waterproof -- IP65



Hook

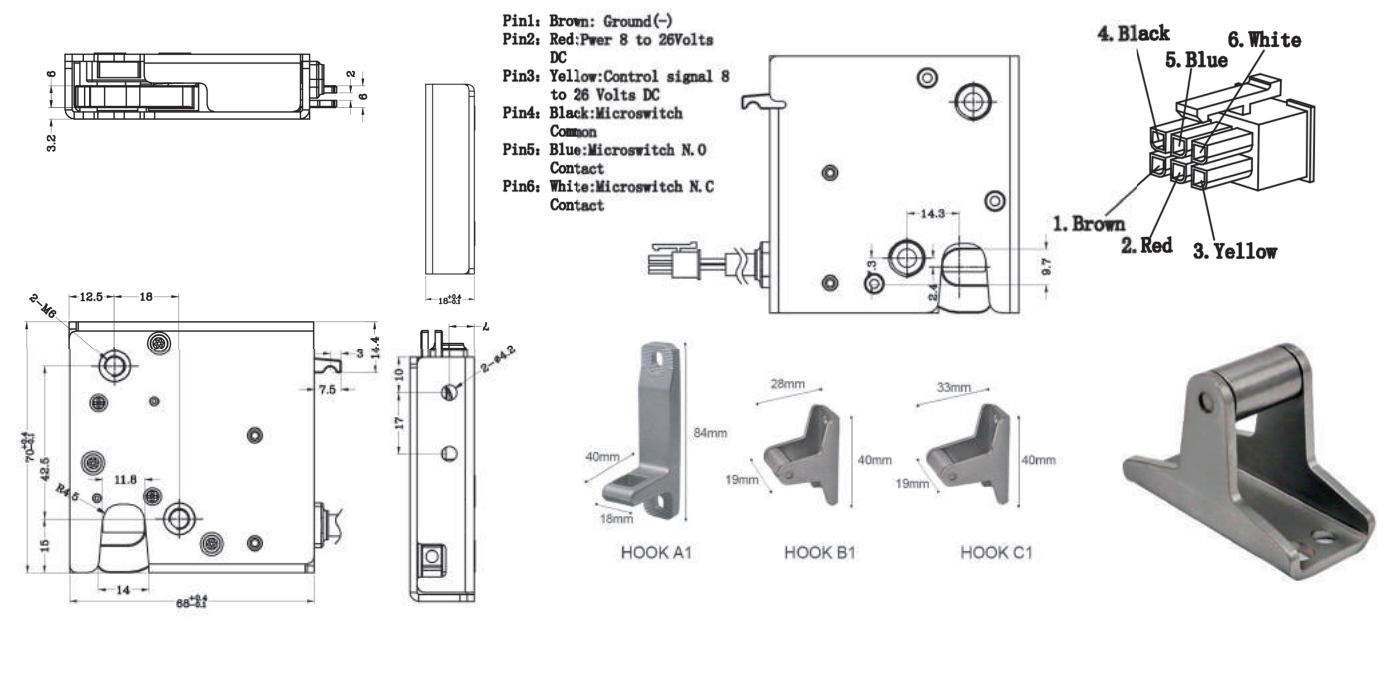


Material of lock bod	304 Stainless steel
Material of lock tongue	Zinc Alloy
Working current	100mA@10V
Power consumption	1W
Static current(signal unlock)	< 20uA
Revolution speed	4.5 Rev/s
Response time	< 300ms
Voltage	8V-24V Typical: 12V
Unlocking times	> 300,000 times



KR-S70

- Motor driven, low power consumption, and more stable.
- 304 stainless steel lock shell, thickness as 2.0mm, strong enough.
- Zinc Alloy lock tongue, can pass more than 72 hours salt spray test. Thickness as 6.0mm, not easy to be broken.
- Mechanical emergency lever, can be unlocked manually in case of power failure.
- Omron detective switch from Japan, working life as 500,000 times.
- Five kinds working signal modes, can meet different customers' requirements.
- Can be waterproof, IP rating as IP65.



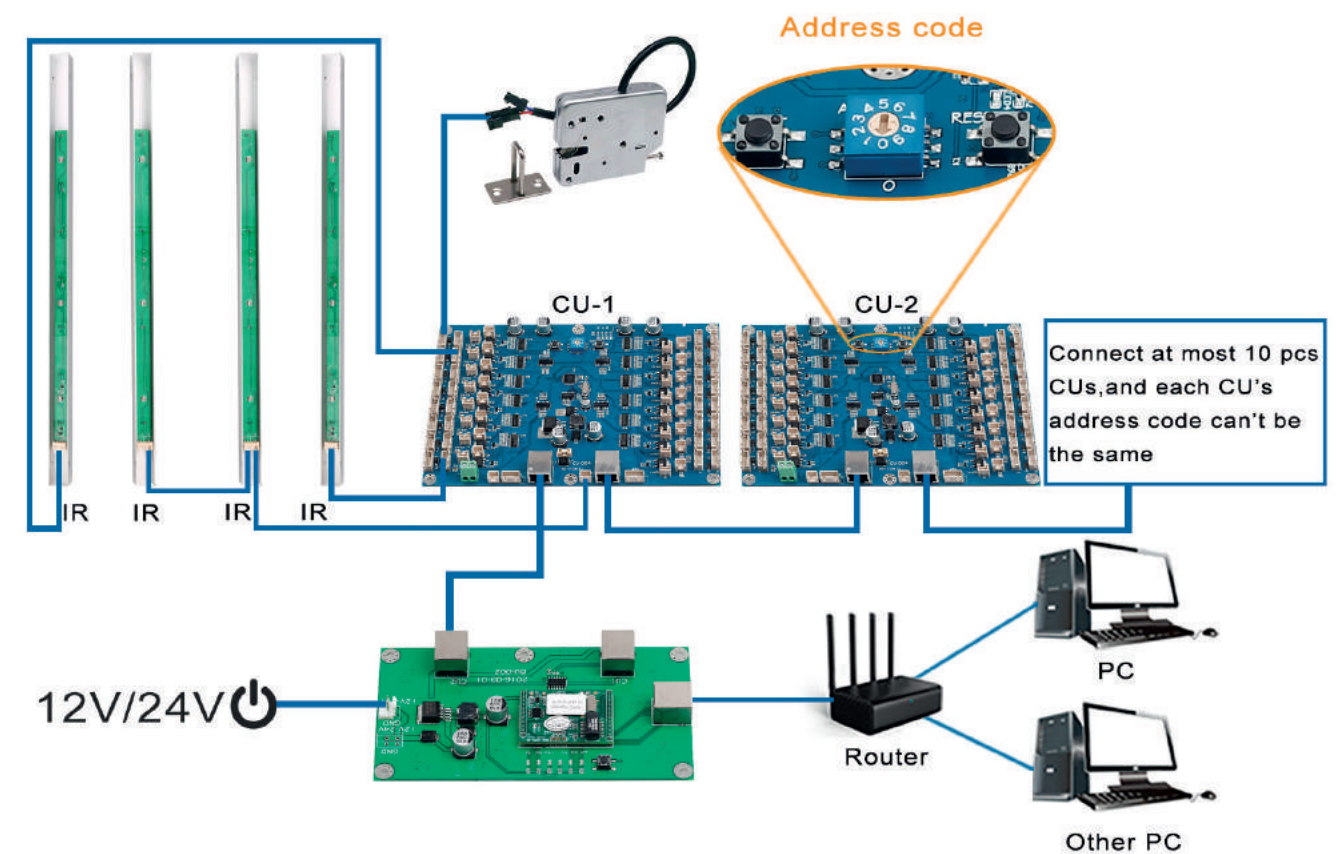
Model	KR-S70
Material	lock body:304 Stainless steel lock tongue: Zinc Alloy
Working current	100mA@10V
Power consumption	1W
Static current (signal unlock)	<20uA
Voltage	12V/24V
Unlocking times	>300,000 times
Revolution speed	4.5 Rev/s
OEM	Accepted



-



-

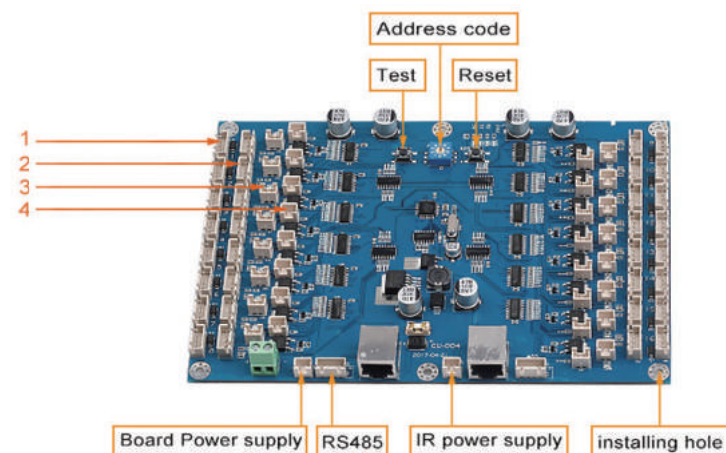
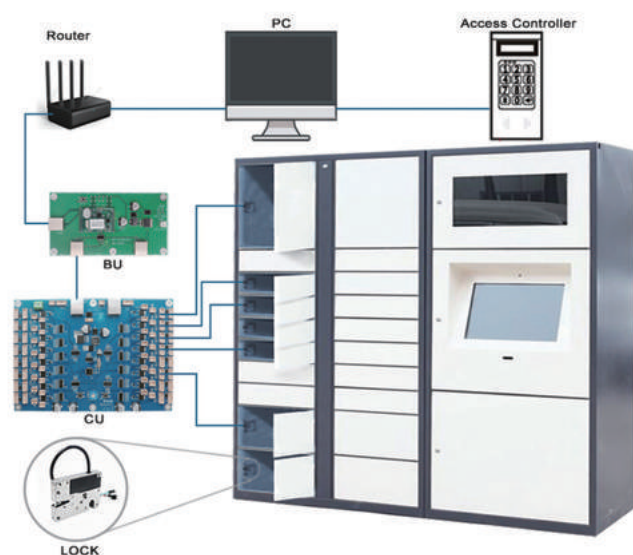
www.keronglock.com / 22

KR-CU

- Lock control board, execute the command from PC and get feedback the status to PC
- Open developed, you can design software completely as you want.
- Two communication modes are supported: TCP / IP and RS485.
- Can work with computers, Pad, Raspberry Pi.
- Suitable for IOS, Windows and Linux.
- Working temperature: -25°C ~65°C .
- With protective box, dustproof.
- High quality modules for stable operation.



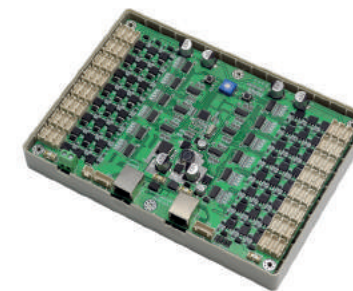
- 1、connecting locks, supply power to locks and detect lock's condition (open/close);
- 2、connecting IR and LED light; IR to check is the locker empty or not; LED light to lighting the locker when lock is open;
- 3、connecting IR feedback light(bi-color); light can be extended to every single locker. Locker is empty, light turns green; locker is occupied, light turns red.
- 4、connecting lock feedback light; light can be extended to every single locker, to show whether the lock is closed or not. Lock open, light turns on; lock close, light turns off.



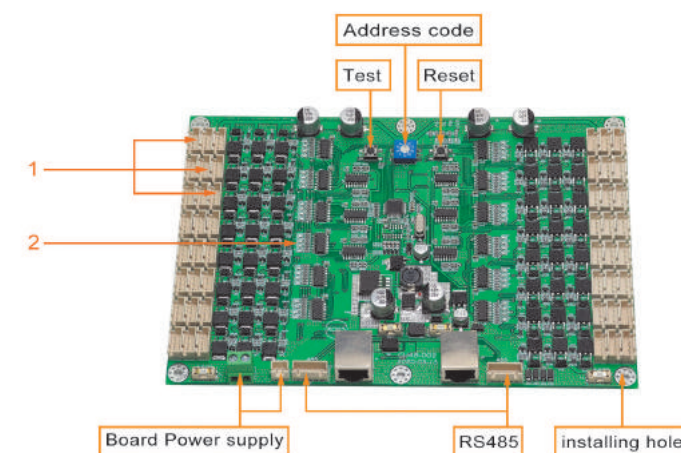
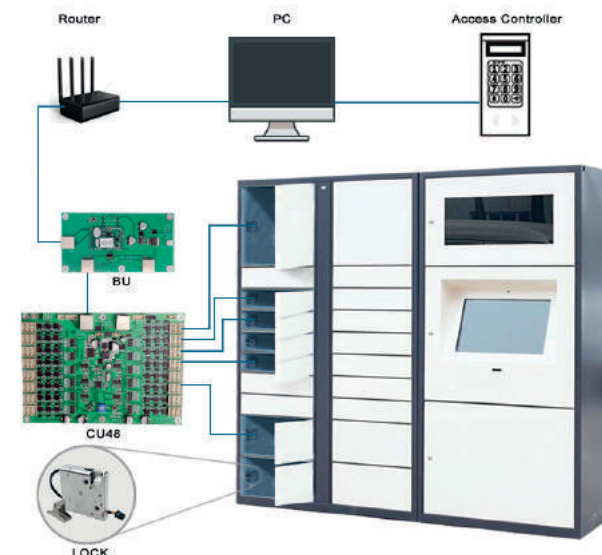
Function	Control locks and feedback lock status
Micro processor module	STM8S103K3T6 QFP32(P0.8mmBS77mm)
Connector model	RJ45, 8P8C
Working voltage	12V~24V
Stand-by power consumption	70mA(12V),40mA(24V)
Dynamic power consumption	Max 3000MA
Reaction time	Less than 1s
Working humidity	10%-90%RH
Communication way	RS485

KR-CU48

- Used to control the lock, supply power to locks and detect lock's condition (open/close); 48 locks can be connected.
- Open developed, you can design software completely as you want.
- Two communication modes are supported: TCP / IP and RS485.
- Can co-work with computer, pad, Raspberry Pi.
- Works well on IOS, Windows and Linux.
- Working temperature: -25°C ~65°C .
- With protect box, anti-dust.
- High quality modules, working stably.



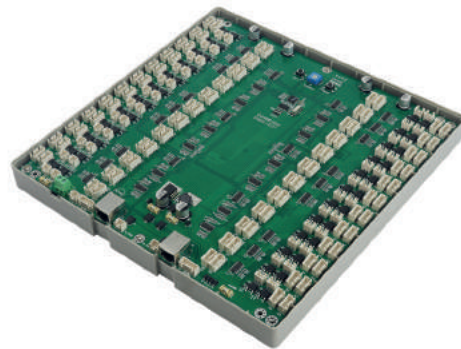
1. connecting locks, supply power to locks and detect lock's condition (open/close);
2. LED for hook detective. Detective switch is on, red LED off; detective switch is off, red LED on.



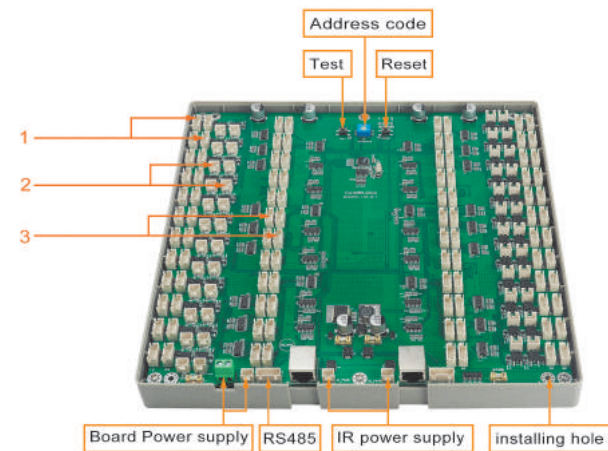
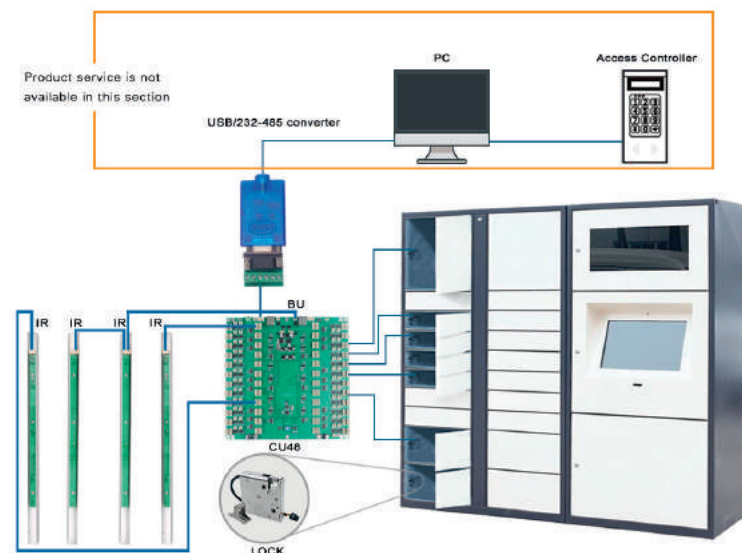
Function	Control locks and feedback status
Micro processor module	STM8S103K3T6 QFP32(P0.8mmBS7*7mm)
Connector model	RJ45, 8P8C
Working voltage	12V~24V
Stand-by power consumption	12V/70mA, 24V/40mA
Dynamic power consumption	Max 3A
Reaction time	Less than 1s
Working humidity	10%-90%RH
Communication way	RS485

KR-CU48B

- Lock control board, execute the command from PC and get feedback the status to PC, 48 locks can be connected.
- Open developed, you can design software completely as you want.
- Two communication modes are supported: TCP / IP and RS485.
- Can co-work with computer, pad, Raspberry Pi.
- Works well on IOS, Windows and Linux.
- Working temperature: -25°C ~65°C .
- With protect box, anti-dust.
- High quality modules, working stably.



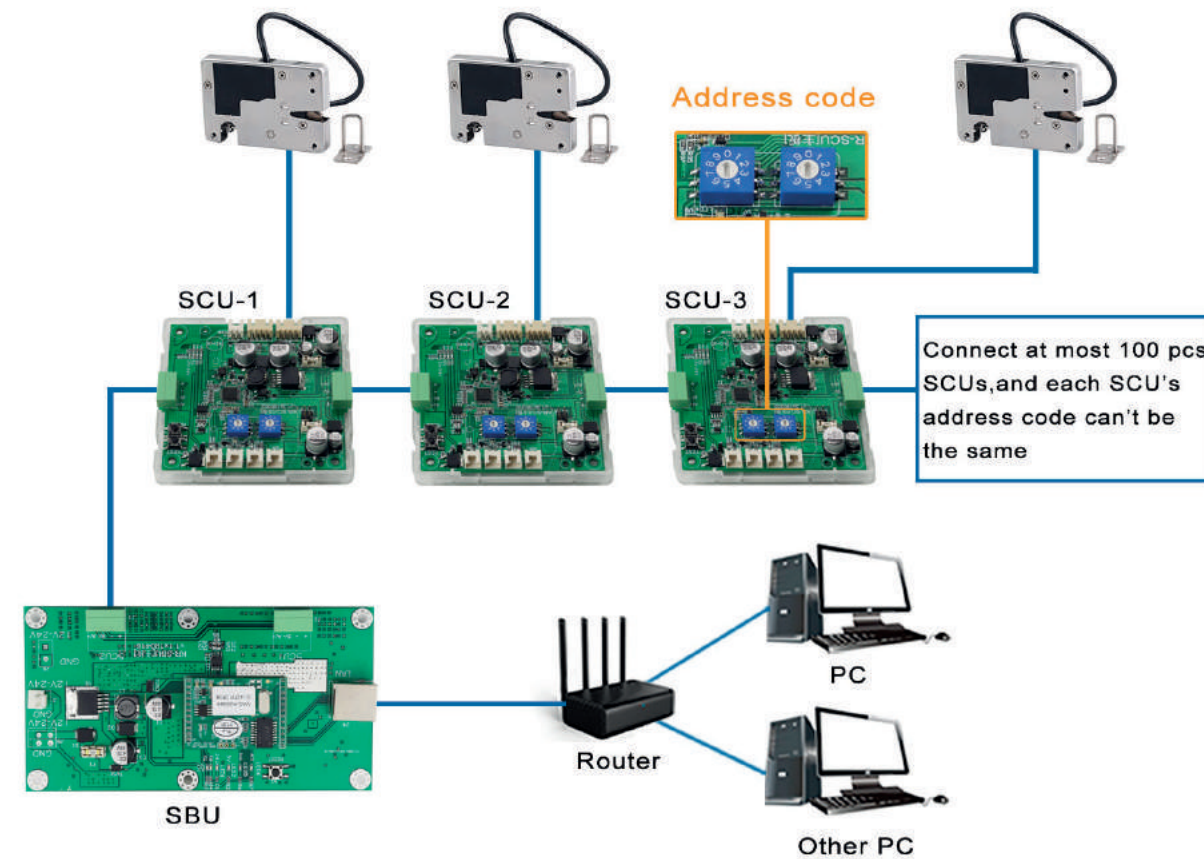
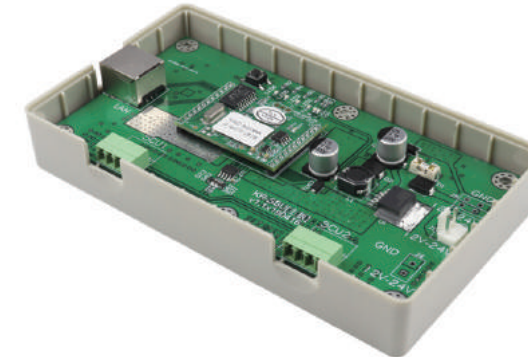
1. connecting locks, supply power to locks and detect lock's condition (open/close);
2. connecting lock feedback light; light can be extended to every single locker, to show whether the lock is closed or not.
Lock open, light turns on; lock close, light turns off.
3. connecting IR and LED light; IR to check is the locker empty or not; LED light to lighting the locker when lock is open;



Function	Control locks and feedback status
Micro processor module	STM8S103K3T6 QFP32(P0.8mmBS7*7mm)
Connector model	RJ45, 8P8C
Working voltage	12V~24V
Stand-by power consumption	12V/70mA, 24V/40mA
Dynamic power consumption	Max 3A
Reaction time	Less than 1s
Working humidity	10%~90%RH
Communication way	RS485

KR-SBU

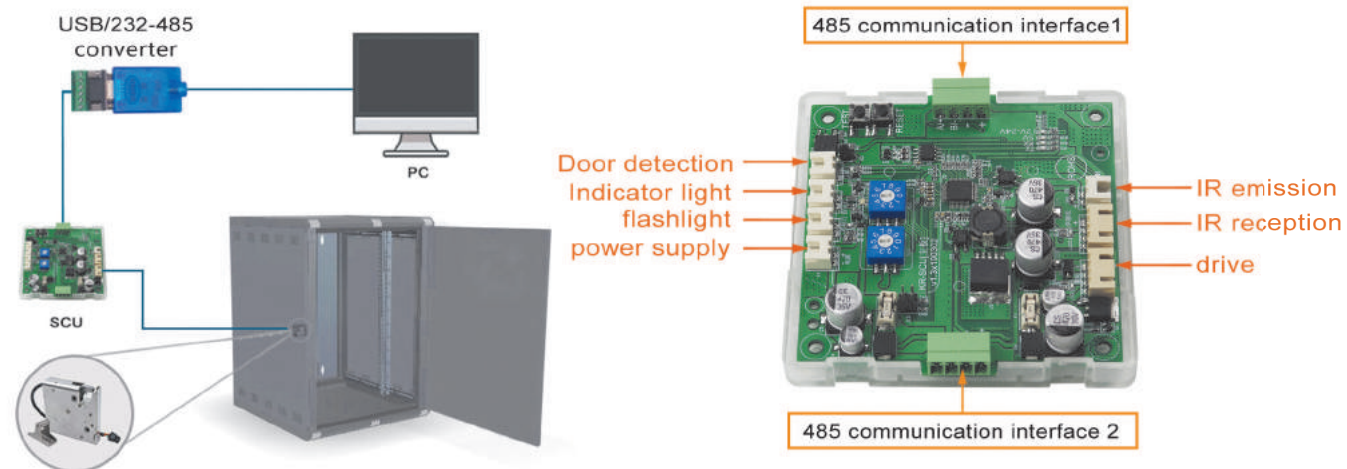
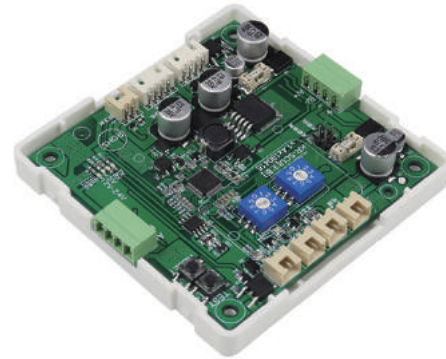
- Lock control board, execute the command from PC and get feedback the status to PC.
- Open developed, you can design software completely as you want.
- Two communication modes are supported: TCP / IP and RS485.
- Can co-work with computer, pad, Raspberry Pi.
- Works well on OS. Windows and Linux.
- Working temperature: -25°C ~65°C .
- With protect box, anti-dust.
- High quality modules, working stably.



Function	Connect with Internet, transfer command to lock control board
Micro processor module	Module for converting TCP IP into RS485
Connector model	RJ45, 8P8C
Working voltage	12V~24V
Stand-by power consumption	80mA(12V), 40mA(24V)
Dynamic power consumption	100mA(12V), 50mA(24V)

KR-SCU

- For network communication Transfer TCP / IP commands (from PC)to 485 format (to SCU).
- Open developed, you can design software completely as you want.
- Two communication modes are supported: TCP / IP and RS485.
- Can work with computers, Pad, Raspberry Pi.
- Suitable for IOS, Windows and Linux.
- Working temperature: -25°C ~65°C .
- With protective box, dustproof.
- High quality modules for stable operation.

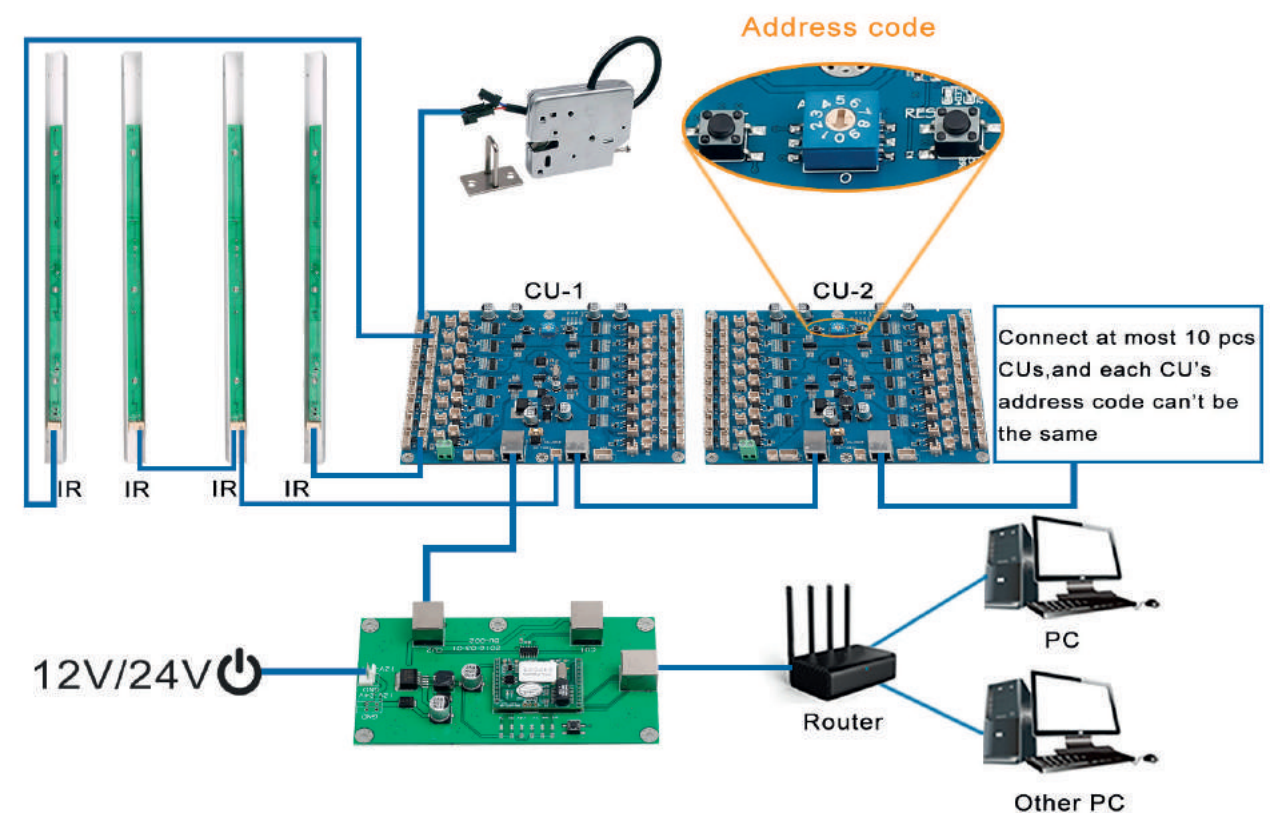
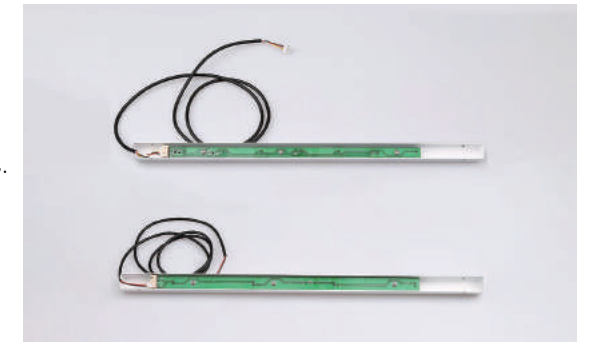


1. connecting locks, supply power to locks and detect lock's condition (open/close);
2. connecting IR and LED light; IR to check is the locker empty or not; LED light to lighting the locker when lock is open;
3. connecting IR feedback light(bi-color); light can be extended to every single locker. Locker is empty, light turns green; locker is occupied, light turns red.
4. connecting lock feedback light; light can be extended to every single locker, to show whether the lock is closed or not. Lock open, light turns on; lock close, light turns off.

Function	Control locks and feedback ock status
Micro processor module	STM8S103K3T6 QFP32(P0.8mmBS77mm)
Connector model	RJ45, 8P8C
Working voltage	12V~24V
Standby power consumption	20mA
Dynamic power consumption	Max 3000MA
Reaction time	Less than 1s
Working humidity	10%-90%RH
Communication way	RS485

KR-IR

- Co-work with CU.
- Detecting locker is empty or occupied.
- Supplying light when lock is unlocked, locker is opened.
- Support customizing dimension and color for various. locker designs.
- Easy installation With locker design drawings. for better reference.



Material	PCB(Printed Circuit Board)+cold rolled plate
Maximum detecting distance	500mm
Function	Detect locker is empty or occupied; supply light when locker is opened
Detector quantity	4 detectors
Connector model	XH2.544P; XH2.542P
Working voltage	12V~24V



Power Adapter

- Connect with power directly, convert 220V-240V power into 12V or 24V then supply power to control board and lock
- Can offer suitable plug according to customers' requirements



RS485-USB Adaptor

- Connect with PC, transfer commands from PC to lock control board



Cable for lock to CU

- Connect lock and CU board
- Support customized connector model and cable length



Power cable for BU



Power cable for CU



LED indicator



RS485-232 Adaptor



Emergency unlocking line



Cable for IR to CU



Ethernet Cable



Model	KR-S66	KR-S66N	KR-S99	KR-S99N	KR-1408	KR-S97	KR-S98C
Surface treatment	/	/	/	/	/	/	Passivation
Material of lock body	430 stainless steel	430 stainless steel	430 stainless steel	430 stainless steel	430 stainless steel	ABS+PC	430 stainless steel+ABS
Material of lock tongue	Zinc alloy	Zinc alloy	Zinc alloy	Zinc alloy	Zinc alloy	Zinc alloy	Zinc alloy
Material of hook	304 stainless steel	304 stainless steel	304 stainless steel	304 stainless steel	304 stainless steel	304 stainless steel	304 stainless steel
Color	Silver	Silver	Silver	Silver	Silver	White	Silver
Size	56*66*13mm	67*59*13mm	69*73*13mm	69*73*13mm	72.5*59*13.5mm	97*66*13.3mm	98*66*13.3mm
Weight with lock hook	158g	182g	196g	201g	176g	127g	197g
Lock weight	146g	170g	184g	189g	164g	115g	185g
Hook weight	A: 11.0g B: 10.5g C: 10.8g D: 11.8g E: 11.4g F: 10.5g	A: 11.0g B: 10.5g C: 10.8g D: 11.8g E: 11.4g F: 10.5g	A: 11.0g B: 10.5g C: 10.8g D: 11.8g E: 11.4g F: 10.5g	A: 11.0g B: 10.5g C: 10.8g D: 11.8g E: 11.4g F: 10.5g	A: 11.0g B: 10.5g C: 10.8g D: 11.8g E: 11.4g F: 10.5g	A: 11.0g E: 11.4g	A: 11.0g E: 11.4g
With or without push lever	/	✓	✓	✓	/	✓(built-in)	✓(built-in)
Anti-force performance	250kgf(2450N)	250kgf(2450N)	250kgf(2450N)	250kgf(2450N)	250kgf(2450N)	110kgf(1078N)	278kgf (2726N)
Door weight	0.5KG~4KG	0.5KG~4KG	0.5KG~10KG	0.5KG~10KG	0.5KG~4KG	0.5KG~20KG	0.5KG~20KG
Whether with door magnetic detection	/	/	/	/	/	/	/
Working Principle	Power-on unlock	Power-on unlock	Power-on unlock	Power-on unlock	Power-on unlock	Power-on unlock	Power-on unlock
Signal detection working mode	Lock states feedback	Lock states feedback	Lock states feedback	Lock states feedback	Lock states feedback	Lock states feedback	Lock states feedback
Working voltage	12V/24V	12V/24V	12V/24V	12V/24V	12V/24V	12V/24V	10V-15V
Maximum power	24W	24W	24W	24W	24W	24W	21W
Working current	0.8A/2A	1A~2A	0.8A/2A	0.8A/2A	0.8A/2A	0.8A/2A	1.75A@12V
Working temperature	-40℃~+75℃	-40℃~+75℃	-40℃~+75℃	-40℃~+75℃	-40℃~+75℃	-40℃~+75℃	-40℃~+75℃
Working humidity	5%~95%RH	5%~95%RH	5%~95%RH	5%~95%RH	5%~95%RH	5%~95%RH	5%~95%RH
Working life	500,000 times	500,000 times	500,000 times	500,000 times	500,000 times	500,000 times	500,000 times
Response time	<20ms	<20ms	<20ms	<20ms	<20ms	<20ms	<20ms
IP rating	/	/	/	/	/	IP65	IP65
Test	Salt spray testing 48 hours	Salt spray testing 48 hours	Salt spray testing 48 hours	Salt spray testing 48 hours	Salt spray testing 48 hours	Salt spray testing 72 hours	Salt spray testing 72 hours
Recommended power-on time	<800ms	<800ms	<800ms	<800ms	<800ms	<800ms	<800ms
Detective switch (open/close)	Omron	Omron	Omron	Omron	Omron	Omron	Omron
Driven method	Solenoid	Solenoid	Solenoid	Solenoid	Solenoid	Solenoid	Solenoid
Elastic power	Strong/weak	Strong/weak	Strong/weak	Strong/weak	Strong/weak	Strong/weak	Strong/weak
Certification	CE; RoHS	CE; RoHS	CE; RoHS	CE; RoHS	CE; RoHS	CE; RoHS	CE; RoHS

- All locks support customizing wires and connectors.
- Mechanical emergency lever, can be unlocked manually in case of power failure.





Model	KR-S79	KR-S79E	KR-S79S	KR-S70	KR-S91	KR-S78	KR-S98A	KR-S98S	KR-S98E
Surface treatment	Wire drawing process	Wire drawing process	Wire drawing process	Wire drawing process	Wire drawing process	Wire drawing process	Passivation	/	Passivation
Material of lock body	304 stainless steel	304 stainless steel	304 stainless steel+PC	304 stainless steel	304 stainless steel+ABS	304 stainless steel+ABS	430 stainless steel+ABS	ABS	430 stainless steel+ABS
Material of lock tongue	Zinc alloy	Zinc alloy	Zinc alloy	Zinc alloy	Zinc alloy	Zinc alloy	Zinc alloy	Zinc alloy	Zinc alloy
Material of hook	304 stainless steel	304 stainless steel	304 stainless steel	304 stainless steel	304 stainless steel	304 stainless steel	304 stainless steel	304 stainless steel	304 stainless steel
Color	Silver	Silver	Silver	Silver	Silver	Silver	Silver	Black	Silver
Size	79*82.5*19.2mm	79*82.5*19.2mm	79*82.5*19.2mm	70*68*18mm	91*66.2*20.3mm	78.3*78*20.3mm	98*67*13mm	98*66*14.5mm	98*67*13mm
Weight with lock hook	439g	439g	431g	339g	273g	258g	187g	116g	187g
Lock weight	380g	380g	368g	280g	210g	199g	175g	104g	175g
Hook weight	A1: 59g B1: 29g C1: 30g	A1: 59g B1: 29g C1: 30g	A0: 62.5g	A1: 59g B1: 29g C1: 30g	A0: 62.5g	A1: 59g B2: 29g C3: 30g	A: 11.0g E: 11.4g	A: 11.0g E: 11.4g	A: 11.0g E: 11.4g
With or without push lever	✓(built-in)	✓(built-in)	✓(built-in)	✓(built-in)	✓(built-in)	✓(built-in)	✓(built-in)	✓(built-in)	✓(built-in)
Anti-force performance	500kgf (4901N)	500kgf (4901N)	500kgf (4901N)	500kgf (4901N)	471kgf (4616N)	471kgf (4616N)	278kgf (2726N)	278kgf (2726N)	278kgf (2726N)
Door weight	10KG~50KG	10KG~50KG	10KG~50KG	10KG~50KG	10KG~50KG	10KG~50KG	10KG~50KG	10KG~50KG	10KG~50KG
Whether with door magnetic detection	/	/	✓	/	✓	/	/	/	/
Working Principle	Signal unlock or Power-on unlock	Signal unlock or Power-on unlock	Signal unlock	Signal unlock or Power-on unlock	Power-on unlock	Power-on unlock	Power-on unlock	Power-on unlock	Power-on unlock
Signal detection working mode	Lock states feedback	Lock states feedback	Lock states feedback Door states feedback Hook states feedback	Lock states feedback	Lock states feedback Door states feedback	Lock states feedback	Lock states feedback	Lock states feedback	Lock states feedback
Working voltage	8V-24V	4V~7.5V	8V~24V	12V/24V	8V/24V	8V/24V	8V-24V	8V-24V	3.5V-7.5V
Maximum power	1.8W	1.4W	1.8W	1.2W	0.72W	0.72W	1.2W	1.8W	1.5W
Working current	100mA@10V	280mA@5V	100mA@10V	100mA@10V	60mA@12V	60mA@12V	12V/100mA	12V/150mA	150mA@5V
Working temperature	-40℃~+75℃	-40℃~+75℃	-40℃~+75℃	-40℃~+75℃	-40℃~+75℃	-40℃~+75℃	-40℃~+75℃	-40℃~+75℃	-40℃~+75℃
Working humidity	5%~95%RH	5%~95%RH	5%~95%RH	5%~95%RH	5%~95%RH	5%~95%RH	5%~95%RH	5%~95%RH	5%~95%RH
Working life	500,000 times	500,000 times	500,000 times	500,000 times	500,000 times	500,000 times	500,000 times	500,000 times	500,000 times
Response time	<300ms	<280ms	<300ms	<550ms	<300ms	<600ms	<300ms	<300ms	<300ms
IP rating	IP65	IP65	IP65	IP65	/	/	IP65	IP65	IP65
Test	Salt spray testing 72 hours	Salt spray testing 72 hours	Salt spray testing 72 hours	Salt spray testing 72 hours	Salt spray testing 72 hours	Salt spray testing 72 hours	Salt spray testing 72 hours	Salt spray testing 72 hours	Salt spray testing 72 hours
Recommended power-on time	400ms~2s	400ms~2s	400ms~2s	400ms~2s	400ms~2s	400ms~2s	400ms~2s	400ms~2s	400ms~2s
Detective switch (open/close)	Omron	Omron	Omron	Omron	Omron	Omron	Omron	Omron	Omron
Revolution speed	4.5 Rev/s	4.5 Rev/s	4.5 Rev/s	1 Rev/s	4.5 Rev/s	4.5 Rev/s	4.5 Rev/s	3.5 Rev/s	4.5 Rev/s
Driven method	Motor/servo	Motor/servo	Motor/servo	Motor/servo	Motor/servo	Motor/servo	Motor/servo	Motor/servo	Motor/servo
Elastic power	Strong/weak	Strong/weak	Strong/weak	Strong/weak	Strong/weak	Strong/weak	Strong/weak	Strong/weak	Strong/weak
Certification	CE; RoHS	CE; RoHS	CE; RoHS	CE; RoHS	CE; RoHS	CE; RoHS	CE, RoHS	CE, RoHS	CE, RoHS

- All locks support customizing wires and connectors.
- Mechanical emergency lever, can be unlocked manually in case of power failure.
- A gear-motor drive distinguishes the latch from competitive solenoid driven electromechanical latches – with lower power requirements, higher load capability.

